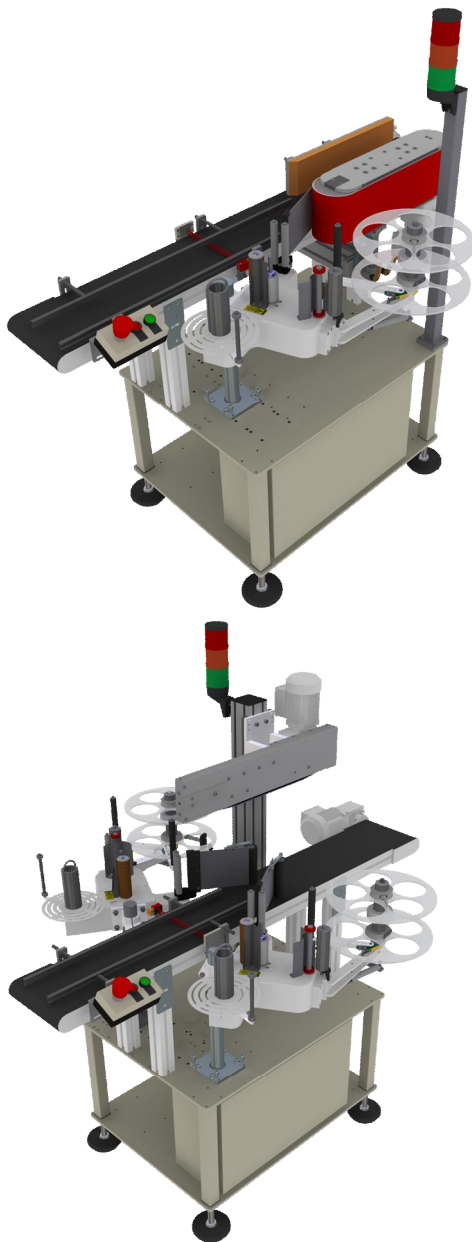


Geset 100



Technical Specifications:


Label size:	Min. 10 x 20 mm (W x H) Max. 150 x 300 mm (W x H) Higher label lengths can also be applied at reduced speed resp. application rate Minimum label gap 3mm
Label roll, outside diameter:	Ø =300 mm (corresponds to 450 m) core = 76 mm (3 1/8")
Maximum application rate:	80 rates/min, depending on product- and label dimension
Application accuracy:	+/- 1 mm
Maximum application speed:	20 m/min
Dimension: (L x W x H in mm)	Depends on version: Geset 121: 1520 (1173) x 880 x 1100 Geset 114: (with 2 applicators): 1520 (1173) x 990 x 1520
Weight:	200 kg depending on version
Power connection:	115 / 230 V 60 / 50 Hz
Power consumption:	1,5 kW
Ambient temperature:	10 . 38 °C
Environmental conditions:	20 . 90 % relative humidity (non condensing)
Protection class:	IP 40
Working height:	At rubber feet: 850 mm +/-50mm On rolls: 850mm +/- 15mm
Directional:	Geset 121: Running direction from left to right. User side in RD right side. Labeler in RD right side Geset 114: Running direction from left to right. User side in RD right side. Labeler in RD right & left side


Charateristics:

- Compact modular construction
- Tough steel base frame
- Simple unmistakably operation by buttons
- Simple integration in available systems by adjustable speeds
- Up to 80 products per minute

Product Characteristics

Take a look to performance calculation in autosync

Geset 121:	
Possible basic design:	
Product distance to each other [M29]:	Min: 0,5 * (label length [mm] [M11] + diameter [mm] [M40]) + 70mm . diameter [mm] [M40]
Application rate:	$(\text{Speed of base conveyer [m/min]} * 1000 / (\text{product distance [mm] [M29]} + \text{diameter [mm] [M40]})) * 0,95$
Diameter [M40]:	Min: 25mm Max: 125mm (at complete wrap-around labeling)
Total height [M9]:	Min: 30mm guiding height Max: 300mm
Ratio Contact surface/total height:	Min: 10
Weight	Min: 10g Max: 5000g
Characteristics:	Glass products: Glasses are usually fraught with larger tolerances. That means, the product has to be checked with an accurate measuring tool whether the products are actually cylindrical. Only a few tenths difference in diameter can cause enormous coiling.

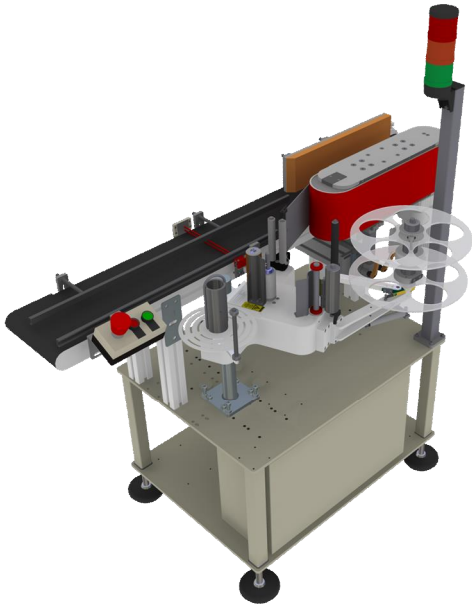
Geset 114:	
Possible basic design:	
Product distance to each other [M29]:	Min: (label length [mm] [M11] + 0,2 * product width [mm] [M7] + 198mm) * 1,05
Application rate:	$(\text{Speed of base conveyer [m/min]} * 1000 / (\text{product distance [mm] [M29]} + \text{diameter [mm] [M40]})) * 0,95$
Width [M7]:	Min: 30mm Max: 180mm
Length [M8]:	Min: 25mm Max: 275mm
Total height [M9]:	Min: 50mm Max: 300mm
Ratio Contact surface/total height:	Min: 10
Weight	Min: 10g Max: 5000g

Comparison between Geset 300 and Geset 100

Characteristics:	Geset 100	Geset 300
Base frame:	Steel varnished	Stainless steel
Operation:	Button	Rotatable Touchdisplay
Controller:	None	Siemens S7 1200
Product variance:	Not suitable	Suitable
Parameter:	Non repeatable adjustments	Repeatable adjustments by digital display
Separation:	None	Option
Alignment:	None	Option
Power connection:	115/230 V	400 V
Standard label applicator:	Alpha Compact	Alpha 86 W

Pre-configured Geset 121

Wrap-around Labeling



Station consists of:

- 1 pcs. Framework, steel varnished RAL 7035 on rubber feet (movable by rolls)
- 1 pcs. Belt strap, L=1450mm (1090mm), W=200mm (100mm), Speed 13 m/min, adjustable, incl. suspension
- 1 pcs. Side guidance, adjustable diagonally to conveying direction
- 1 pcs. Wrap belt, Speed 26m/min, adjustable
- 1 pcs. Suspension wrap belt, vertically adjustable by tube clamping, (fix suspension by angle)
- 1 pcs. Label applicator Alpha Compact Working width 150mm, HMI Panel, Change-peeler blade; peeler plate \varnothing width 150mm
- 1 pcs. Suspension label applicator, vertically adjustable manually by tube clamping piece, incl. Gimbal by lifting screw (vertically adjustable by mandrel, adjustment range +100mm, incl. Gimbal by clamping screw)
- 1 pcs. Start pulse emission incl. bracket
- 1 pcs. Switch cabinet varnished RAL 7035; incl.:
 - main switch in door of switch cabinet
 - button box (On-/Off switch, Emergency Off), fixed at base conveyor
 - 2x Frequency converter

Pre-configured Geset 114

Side-Labeling Station (Labeling on one or two sides for selection)



Station consists of:

- 1 pcs. Framework, steel varnished RAL 7035 on rubber feet (movable by rolls)
- 1 pcs. Wrap belt, L=1450mm (1090mm), W=200mm (100mm), Speed 13 m/min, adjustable, incl. suspension
- 1 pcs. Side guidance, adjustable diagonally to conveying direction
- 1 pcs. Top conveyor, Speed 13m/min, adjustable
- 1 pcs. Suspension top conveyor, vertically adjustable manual by profile flutes, (vertically adjustable by mandrel)
- 2(1) pcs. Label applicator Alpha Compact Working width 150mm, HMI Panel, Change-peeler blade; peeler plate \varnothing width 150mm
- 2(1) pcs. Suspension label applicator, vertically adjustable manual by tube clamping piece, incl. Gimbal by lifting screw (vertically adjustable by mandrel, adjustment range +100mm, incl. Gimbal by clamping screw)
- 2(1) pcs. Start pulse emission incl. bracket
- 1 pcs. Switch cabinet varnished RAL 7035; incl.:
 - main switch in door of switch cabinet
 - button box (On-/Off switch, Emergency Off), fixed at base conveyor
 - 2x Frequency converter

Modules

Framework

Framework movable (art.-no.: 37120292):



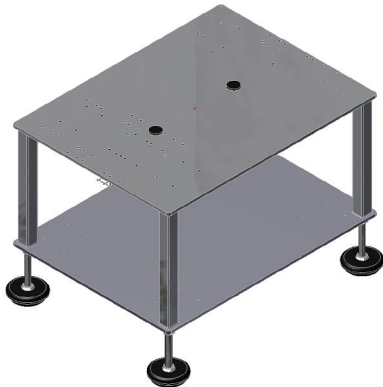
Characteristics:

- Steel varnished RAL 7035
- Open base frame
- Support for switch cabinet
- Suitable for Geset 121 and Geset 114
- On rolls
- Fix working height
- Hole pattern for each configuration

Rules:

- For each station, one framework is required
- Not suitable for unevenness in the ground and ramp

Framework stationary (art.-no.: 37120270):



Characteristics:

- Steel varnished RAL 7035
- Open base frame
- Support for switch cabinet
- Suitable for Geset 121 and Geset 114
- At rubber feet
- Adjustable working height in range of +/- 50 mm
- Hole pattern for each configuration

Rules:

- For each station, one framework is required

Switch cabinet

230 V (art.-no.: 33010612):



Characteristics:

- Steel varnished RAL 7035
- Suitable for base frame Geset 100
- Main switch in switch cabinet & door
- Incl. Button box (On-/Off switch, Emergency Off)
- Incl. 2 Frequency converter
- 230 V

Rules:

- For each station, one switch cabinet is required

115 V Transformer (art.-no.: 33010611):



Characteristics:

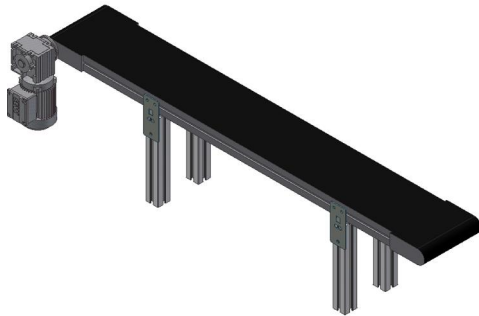
- Dimension 120 x 105 x 125mm
- Suitable for switch cabinet Geset 100
- transformer is installed ex-factory in switch cabinet.

Rules:

- At 115V station, the Geset 100 switch cabinet (33010612) has to be upgraded by the transformer.
- The transformer is then installed in the switch cabinet of the Geset 100 ex-factory.

Base conveyor

Width 200mm, Length 1450mm (art.-no.: 32800057):



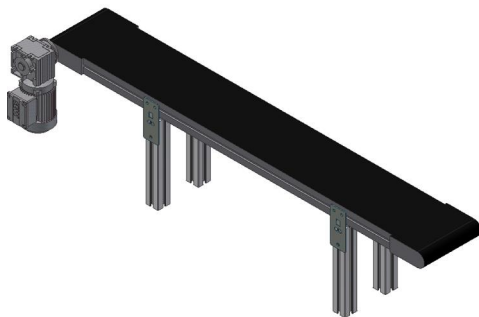
Characteristics:

- Three-phase drive adjustable
- Speed 8 to 20 m/min
- Incl. Support for mounting at base frame
- Suitable for Geset 121 and Geset 114
- Belt type Ropanyl EM 8/2 blue
- Without run-on and run-out plates
- Mounting at Geset 100 base frame
- SEW power unit

Rules:

- For each station, one base conveyor is required

Width 200mm, Length 1090mm (art.-no.: 32800052):



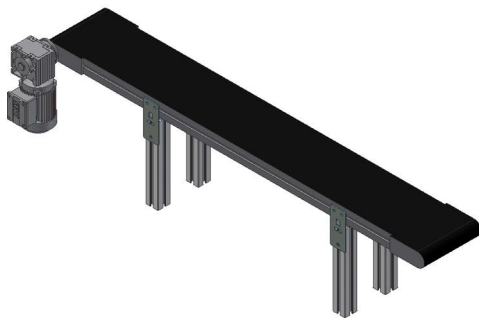
Characteristics:

- Three-phase drive adjustable
- Speed 8 bis 20 m/min
- Incl. Support for mounting at base frame
- Suitable for Geset 121 and Geset 114
- Belt type Ropanyl EM 8/2 blue
- Without run-on and run-out plates
- Mounting at Geset 100 base frame
- SEW power unit

Rules:

- For each station, one base conveyor is required

Width 100mm, Length 1450mm (art.-no.: 32800059):



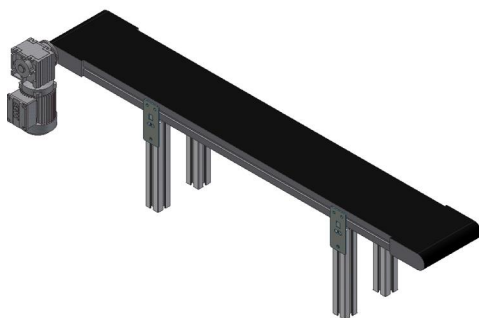
Characteristics:

- Three-phase drive adjustable
- Speed 8 bis 20 m/min
- Incl. Support for mounting at base frame
- Suitable for Geset 121 and Geset 114
- Belt type Ropanyl EM 8/2 blue
- Without run-on and run-out plates
- Mounting at Geset 100 base frame
- SEW power unit

Rules:

- For each station, one base conveyor is required

Width 100mm, Length 1090mm (art.-no.: 32800058):



Characteristics:

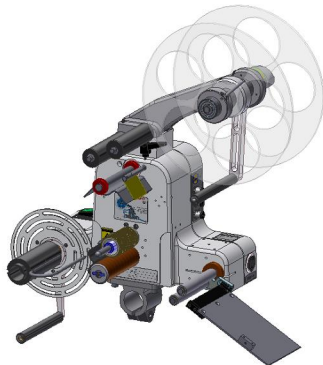
- Three-phase drive adjustable
- Speed 8 bis 20 m/min
- Incl. Support for mounting at base frame
- Suitable for Geset 121 and Geset 114
- Belt type Ropanyl EM 8/2 blue
- Without run-on and run-out plates
- Mounting at Geset 100 base frame
- SEW power unit

Rules:

- For each station, one base conveyor is required

Label applicator

Basis Applicator Alpha Compact 120mm Width, LH (art.-no.: 32100062):



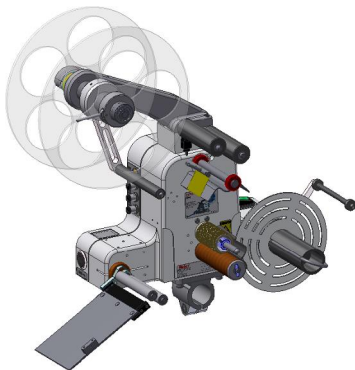
Characteristics:

- Basis Alpha Compact 120mm, LH
- Incl. unwinder RH
- Without label detection
- Incl. Change peeler plate 120mm Width, fix
- Incl. power cable

Rules:

- A label detection has to be selected from modular construction.
- A HMI has to be selected from the options
- Further options like low label prewarning or alarm lamp are possible

Basis Applicator Alpha Compact 120mm Width, RH (art.-no.: 32100061):



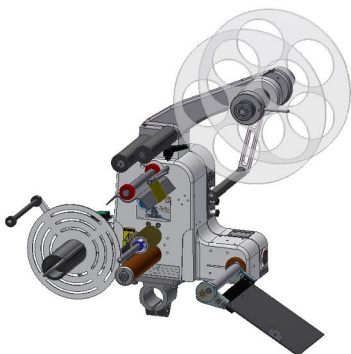
Characteristics:

- Basis Alpha Compact 120mm, RH
- Incl. unwinder LH
- Without label detection
- Incl. Change peeler plate 120mm Width, fix
- Incl. Power cable

Rules:

- A label detection has to be selected from modular construction
- A HMI has to be selected from the options
- Further options like low label prewarning or alarm lamp are possible

Basis Applicator Alpha Compact 150mm Width, LH (art.-no.: 32100064):



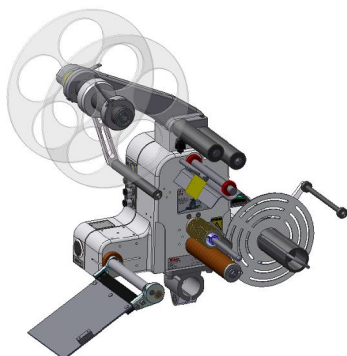
Characteristics:

- Basis Alpha Compact 150mm, LH
- Incl. unwinder RH
- Without label detection
- Incl. Change peeler plate 150mm Width, fix
- Incl. Power cable

Rules:

- A label detection has to be selected from modular construction
- A HMI has to be selected from the options
- Further options like low label prewarning or alarm lamp are possible

Basis Applicator Alpha Compact 150mm Width, RH (art.-no.: 32100063):



Characteristics:

- Basis Alpha Compact 150mm, RH
- Incl. unwinder LH
- Without label detection
- Incl. Change peeler plate 150mm Width, fix
- Incl. Power cable

Rules:

- A label detection has to be selected from modular construction
- A HMI has to be selected from the options
- Further options like low label prewarning or alarm lamp are possible

Suspension Label Applicator

Round tube with clamping ring incl. Gimbal by lifting screws (art.-no.: 37120031):



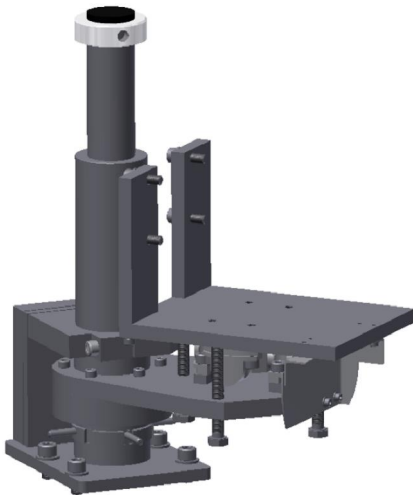
Characteristics:

- Steel galvanized
- Prepared for flange clamping piece of Alpha Compact
- Incl. Gimbal by four lifting screws
- Vertical adjustment by loosening of clamping screw and manual adjustment of the Alpha
- Only suitable for singular up to few adjustments
- Installation at Geset 100 base frame

Rules:

- For each applicator, one suspension is required
- Not suitable for many product changes

Round tube with external thread adjustment incl. Gimbal by lifting screws (art.-no.: 37120524):



Characteristics:

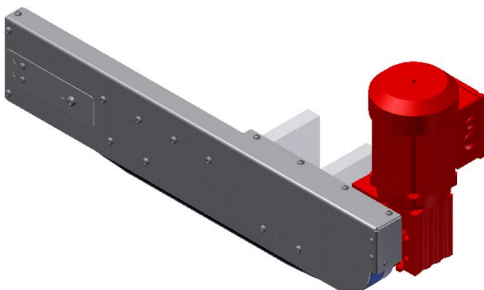
- Steel galvanized
- Prepared for flange clamping piece of Alpha Compact
- Incl. Gimbal by four lifting screws
- Vertical adjustment by loosening of clamping screw and manual adjustment of the mandrel
- Convenient adjustment
- Adjustment range 100mm
- Installation at Geset 100 base frame

Rules:

- For each applicator, one suspension is required

Top Conveyor

Top conveyor (art.-no.: 37120549):



Characteristics:

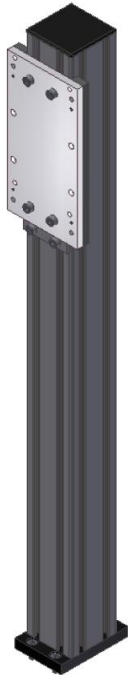
- Three-phase drive adjustable
- Speed 8 to 20 m/min
- Incl. One spring element and 3mm coated timing belt
- Total length 635mm (usable length 275mm)
- Total width 30mm (belt width 20mm)
- SEW power unit

Rules:

- Usable only for Geset 114
- Can't be combined with wrap belt
- The top conveyor requires a suspension

Suspension for Top Conveyor

Adjustment manually by profile flutes (art.-no.: 37120024):



Characteristics:

- Open flute profile aluminium
- Vertical adjustment by loosening of clamping screws and moving in the profile flutes
- Mounting at Geset 100 base frame
- Adjustment range 320mm from top edge base conveyor to bottom edge top conveyor
- Only suitable for singular up to few adjustments

Rules:

- Usable only for Geset 114
- Only reasonable in connection with top conveyor
- Not suitable for many product changes

Mandrel adjustment (art.-no.: 37120240):



Characteristics:

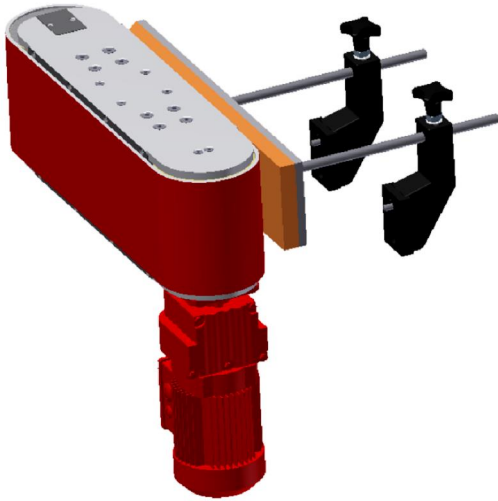
- Open flute profile aluminium
- Vertical adjustment by turning of crank
- Mounting at Geset 100 base frame
- Adjustment range 320mm from top edge base conveyor to bottom edge top conveyor

Rules:

- Usable only for Geset 114
- Only reasonable in connection with top conveyor
- Suitable for greater product diversity

Wrap Belt

Wrap belt (art.-no.: 37120336):



Characteristics:

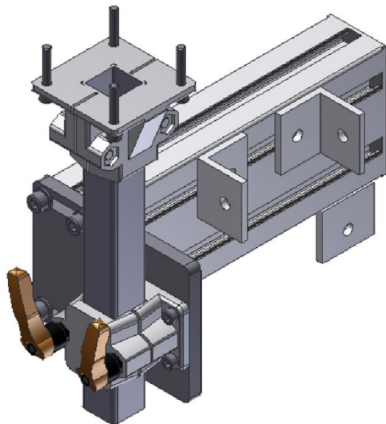
- Three-phase drive adjustable
- Speed 8 to 40 m/min
- Height of wrap belt 158mm
- Usable length of wrap belt 400mm
- Incl. counter pressure plate height 110mm, adjustable diagonally to running direction

Rules:

- Usable only for Geset 121
- The wrap belt requires a suspension for the wrap belt

Suspension Wrap Belt

Suspension wrap belt, vertically adjustable manual by tube clamping (art.-no.: 32800056):



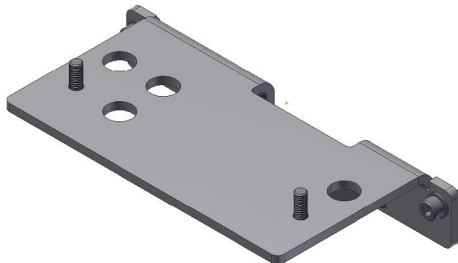
Characteristics:

- Vertical adjustment by loosening of clamping lever and manual adjustment of height
- Mounting at transport conveyor Geset 100
- So the wrap belt is able to slip% laterally beside the transport belt and thus products with sticking out cover can be labeled.
- Adjustable range of 70mm downstairs, 20mm upstairs

Rules:

- For each wrap-belt, one suspension is required

Suspension wrap belt, fix suspension by angle (art.-no.: 37120309):



Characteristics:

- Mounting at transport conveyor Geset 100
- No adjustment of wrap belt possible.

Rules:

- For each wrap-belt, one suspension is required

Side Guidance

Geset 121, for main conveyor with 1090mm length (art.-no.: 37120343):



Characteristics:

- Adjustable diagonally to conveying direction
- Plastic coated
- Simple adjustment by clamp lever

Rules:

- For each station, one side guidance is required.
- Useful only for base conveyor length 1090mm

Geset 114, for main conveyor with 1090mm length (art.-no.: 37120638):



Characteristics:

- Adjustable diagonally to conveying direction
- Plastic coated
- Simple adjustment by clamp lever

Rules:

- For each station, one side guidance is required.
- Useful only for base conveyor length 1090mm

Geset 121, for main conveyor with 1450mm length (art.-no.: 37120640):



Characteristics:

- Adjustable diagonally to conveying direction
- Plastic coated
- Simple adjustment by clamp lever

Rules:

- For each station, one side guidance is required.
- Useful only for base conveyor length 1450mm

Geset 114, for main conveyor with 1450mm length (art.-no.: 37120344):



Characteristics:

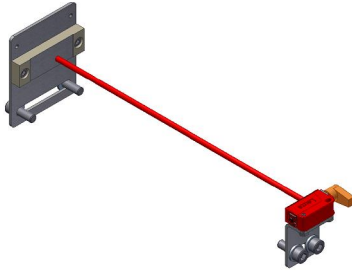
- Adjustable diagonally to conveying direction
- Plastic coated
- Simple adjustment by clamp lever

Rules:

- For each station, one side guidance is required.
- Useful only for base conveyor length 1450mm

Product Light Barriers

For one applicator (art.-no.: 37120591):



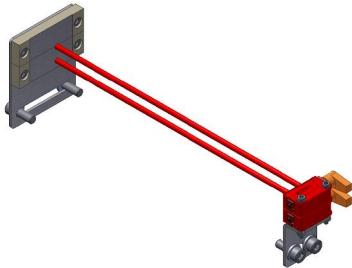
Characteristics:

- Reflective light barrier
- Also detects of highly transparent foils and glass
- Mirror as reflector

Rules:

- For each applicator, one product light barrier is required.

For two applicators (art.-no.: 37120590):



Characteristics:

- Reflective light barrier
- Also detects highly transparent foils and glass
- Mirror as reflector

Rules:

- For each applicator, one product light barrier is required.

Suspension control unit

Suspension control unit (Art.-Nr.: 37120589):



Characteristics:

- Steel varnished RAL 7035
- For mounting the control box
- For mounting the HMI Panel or HMI Display

Rules:

- For each applicator, one suspension barrier is required.