

# RFID Systems & Solutions

*For RFID Smart Label Encoding, Printing and Application*



**Weber**  
Labels & Labeling Systems

## RFID: Alive, well and growing



Radio Frequency Identification (RFID) is one of the fastest growing segments of what's commonly referred to as automatic identification and data capture (AIDC).

This unattended, wireless means of data capture and exchange has been spurred in recent years by the mandates of mass retailers and government agencies like the U.S. Department of Defense, which seek to streamline and economize their highly sophisticated supply chain operations.

Today the use of RFID technology has grown beyond those programs as well, and can be found in functions that include materials management, asset tracking, logistics and package security.

In other words, RFID is here to stay.

Here at Weber, we are providing a combination of solutions that will help make it easy for companies to meet the existing and the emerging specifications associated with RFID labeling.

Our solutions range from stand-alone RFID label printer-encoders to fully automatic systems that print, encode and apply RFID smart labels to cases and pallets on the production line.

In addition, we also manufacture RFID smart labels embedded with a variety of inlays to be certain that our customers can satisfy the needs of their customers.

The emergence of RFID presents an exciting new opportunity to improve the way industry captures and uses product data. Weber will continue to work very hard to ensure that we remain on the leading edge of RFID development.

## RFID Smart Labels

*We're applying our label manufacturing expertise to RFID smart labels.*

Weber is a leading manufacturer of labels. We utilize the latest high-speed flexographic presses to produce both blank and printed labels and tags.

Our innovative method of inserting RFID inlays fits seamlessly within that conversion process to create our own brand of smart labels: Weber SmartTrak.

All SmartTrak RFID labels are produced using fully tested RFID inlays from trusted sources like Avery Dennison, Alien Technology and UPM RFID. Each inlay is certified by its manufacturer and inspected by Weber.

Because we manufacture the RFID smart labels ourselves, we're able to offer RFID media that will maximize performance and minimize costs. We also can help determine which inlay will deliver the best performance for a specific application.

And we test 100 percent of our SmartTrak RFID labels.

>> **Get Info @ [www.weberpackaging.com/rfid\\_labels.html](http://www.weberpackaging.com/rfid_labels.html)**



## Printing & Encoding Software

*The same dependable software that eases label printing now includes RFID encoding.*

Our exclusive Legitronic® Labeling Software has been the driving force behind the functionality of every Weber label printer and printer-applier. So we added RFID encoding features to make it even more powerful.

This software package uses advanced features to make it easy to design, edit and maintain label formats, plus precisely control the operation of label printers and RFID printer-encoders. It's ideal for networks and efficiently handles multiple systems and shared file support.

Label formats can be created from a selection of built-in features, and the software supports the encoding of RFID smart labels compatible with EPC Gen 2 protocols.

>> **Get Info @ [www.weberpackaging.com/labeling\\_software.html](http://www.weberpackaging.com/labeling_software.html)**



## RFID Reader

Weber's RFID reader provides multi-protocol capabilities that make it interoperable with EPC Gen 2 smart labels.

It offers performance enhancements that include North American regulatory compliance, configurable read/write power settings suited for various environments, plus other features that make it ideal for use with Weber RFID systems.





# RFID Printer-Encoder-Applicator

*System identifies and rejects unverifiable tags before they are applied.*

The Model 5300rfid Series provides every benefit of one-step pressure-sensitive label printing and application, and adds RFID smart label encoding and verification.

Our exclusive RFID label printer-applicator makes it easy to print, encode, verify and apply pressure-sensitive RFID smart labels to cartons and pallet loads in one automatic operation. In addition, the system determines if a tag is unverifiable and rejects it prior to application.

The Model 5300rfid offers a selection of thermal/thermal-transfer print-encode engines— including units from Zebra Technologies— that produces smart labels imprinted with text, bar codes and graphics at 203 or 300 dpi. Depending upon the print engine selected, smart labels can be up to five inches wide and six inches long and can be dispensed at up to 12 ips.

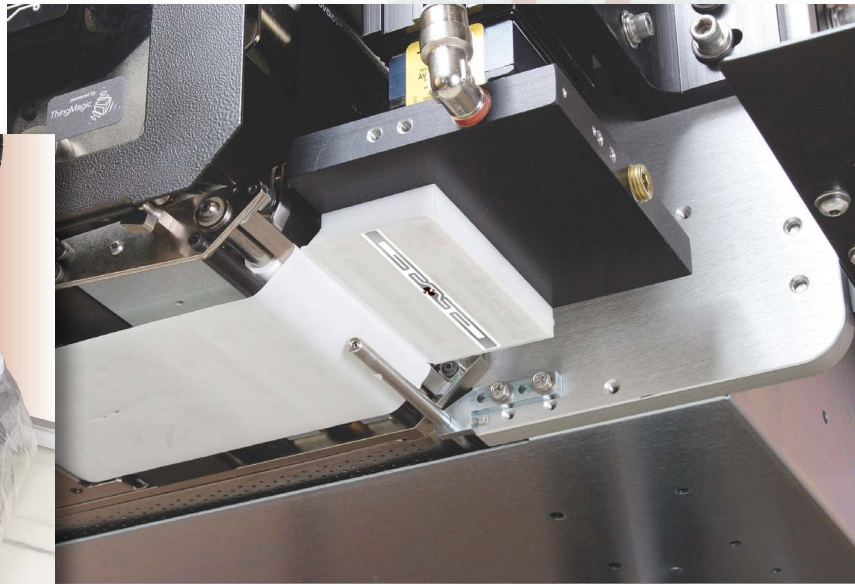
As a smart label is printed, the Model 5300rfid's integrated encoder simultaneously transfers digital information to the thin, ultra-high frequency (UHF) transponder that is embedded in the pressure-sensitive label material.

That encoded information instantly is verified by the system, which then applies the smart label to the top or side of a carton or pallet load as it moves by on a conveyor line. Labels are applied using the non-contact, tamp-blow method, which gently blows the label onto the surface from 0.25" and is accurate to within 0.06".

## Pre-Apply Reject

If a tag is not verifiable, the system's unique swing plate automatically is deployed to intercept the smart label prior to application. This method does not alter print engine operation, media handling or dispensing, yet collects and counts the rejected labels for subsequent disposition.

The print engines encode EPC Gen 2 inlays. And because its firmware is upgradeable to support new protocols, users are assured that they can seamlessly upgrade to future RFID



>> **Get Info @ [www.weberpackaging.com/5300\\_rfid\\_label\\_printer\\_applicator](http://www.weberpackaging.com/5300_rfid_label_printer_applicator).**

## Weber Partners

Weber has formed valuable partnerships with companies that are expert at various facets of RFID technology, including hardware, software, middleware and RFID inlays. We are proud to be associated with these firms:



# RFID Printer-Encoders

**Our Zebra-brand units combine label printing and RFID encoding.**

Weber's printer-encoders produce RFID smart labels that comply with the latest EPC protocols to make it easy to meet the requirements of retailers and government agencies.

The units encode case- and pallet-level smart labels and verify the accuracy of the encoded data to assure compliance. In addition, the systems also imprint text, bar codes and graphic images at 203 or 300 dpi, plus deliver them at up to 10 ips.

These dependable Zebra-brand printer-encoders are the ideal stand-alone solutions for streamlining logistics and supply chain management and other related applications.

>> **Get Info @ [www.weberpackaging.com/rfid\\_printers.html](http://www.weberpackaging.com/rfid_printers.html)**



## RFID Ready

*For companies that need a stand-alone printer or in-line printer-appliator now but might migrate to RFID technology in the future, select models are available in RFID Ready versions for future upgradeability.*

# RFID Service Bureau

**A third-party solution to RFID compliance.**

For companies that need to establish RFID labeling right away or are not ready to acquire equipment to encode smart labels on site, we provide an alternative.

Weber's RFID Service Bureau is equipped with the latest Zebra-brand RFID printer-encoders. These systems not only print and encode SmartTrak RFID labels, they also verify readability and compliance.

We also can provide encoded smart labels printed with text and bar codes in resolutions of 203 or 300 dpi.



## Get More Info Today

*For additional details on Weber's RFID solutions, please visit our web site. To speak to someone directly or arrange a no-obligation, on-site evaluation of a specific operation, please phone **1.800.843.4242** and ask to be put in contact with the Weber RFID expert in your area.*

## Weber Packaging Solutions, Inc.

**World Headquarters**  
Weber Packaging Solutions, Inc.  
711 W. Algonquin Road  
Arlington Heights, IL 60005-4457  
Phone: 847.364.8500  
Fax: 847.364.8575  
info@weberpackaging.com  
www.weberpackaging.com

**Canada**  
Weber Marking Systems of Canada  
6180 Danville Road  
Mississauga, Ontario L5T 2H7  
Phone: 905.564.6881  
Fax: 905.564.6886  
info@webermarking.ca  
www.webermarking.ca

**United Kingdom**  
Weber Marking Systems UK  
Macmerry Industrial Estate  
Tranent, East Lothian EH33 1HD  
Scotland  
Phone: +44.187561.1111  
Fax: +44.187561.3310  
sales@weber.co.uk  
www.weber.co.uk

**Germany**  
Weber Marking Systems GmbH  
Maarweg 33  
D-53619 Rheinbreitbach  
Germany  
Phone: +49.2224.77080  
Fax: +49.2224.770820  
info@webermarking.de  
www.webermarking.de  
www.bluhmsysteme.com

**Thailand**  
Weber Marking Systems (Thailand), Ltd.  
39/73 Samutsakom Industrial Estate  
Moo 2, Rama 2 Road,  
Bang Ka-Jao, Muang,  
Samutsakom 74000, Thailand  
Phone: +66.34.490639  
Fax: +66.34.490.638  
E-mail: sales@weber.co.th

**Belgium**  
Weber Marking Systems SA  
Interleuvenlaan Nr. 23, Bus 2  
3001 Leuven-Heverlee, Belgium  
Phone: +32.16.38.79.50  
Fax: +32.16.38.79.59  
E-Mail: info@webermarking.be

**Denmark**  
Bluhm Danmark A/S  
Nordkrogen 7  
DK-7300 Jelling, Denmark  
Phone: +45.75.87.26.00  
Fax: +45.75.87.26.10  
salesdk@bluhmsysteme.com  
www.bluhmsysteme.dk

**France**  
Weber France S.A.  
ZI de Montaudran  
15, impasse Didier Daurat-BP 44419  
31 405 Toulouse Cedex 4- France  
Phone: +33.562.47.2737  
Fax: +33.562.47.1626  
weber@webermarking.fr  
www.webermarking.fr

**Austria**  
Bluhm Systeme GmbH  
Rüstorf 82  
A-4690 Schwandenstadt, Austria  
Phone: +43.7673.4972.15  
Fax: +43.7673.4974  
gresch@bluhmsysteme.com

**Ireland**  
Weber Labelling & Coding Ltd.  
Kilcannon Industrial Estate,  
Old Dublin Road,  
Enniscorthy, County Wexford, Ireland  
Phone: ++353.539.233778  
Fax: ++353.539.233284  
sales@weberireland.com

**Weber**  
Labels & Labeling Systems

[www.weberpackaging.com](http://www.weberpackaging.com)

